

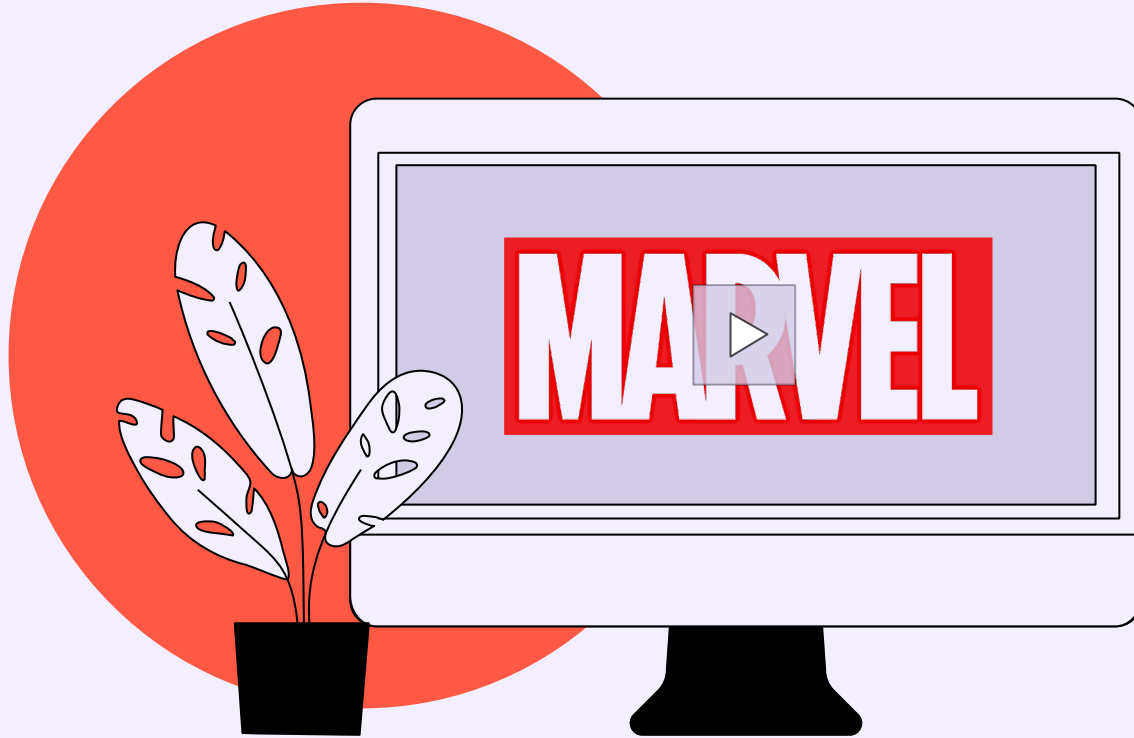
People Expect
Different Aggressive Motivations
from **Expressors** of
Anger Versus **Disgust**

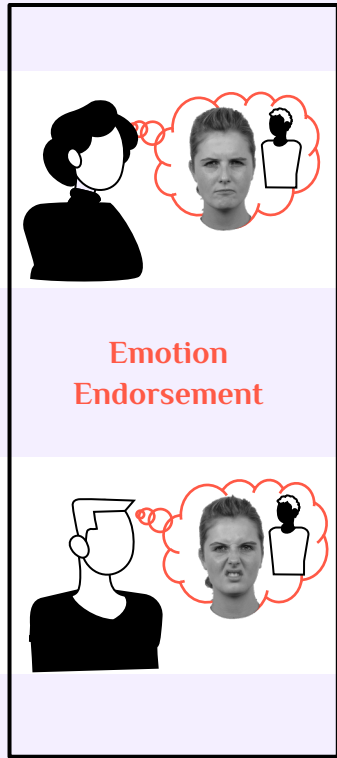
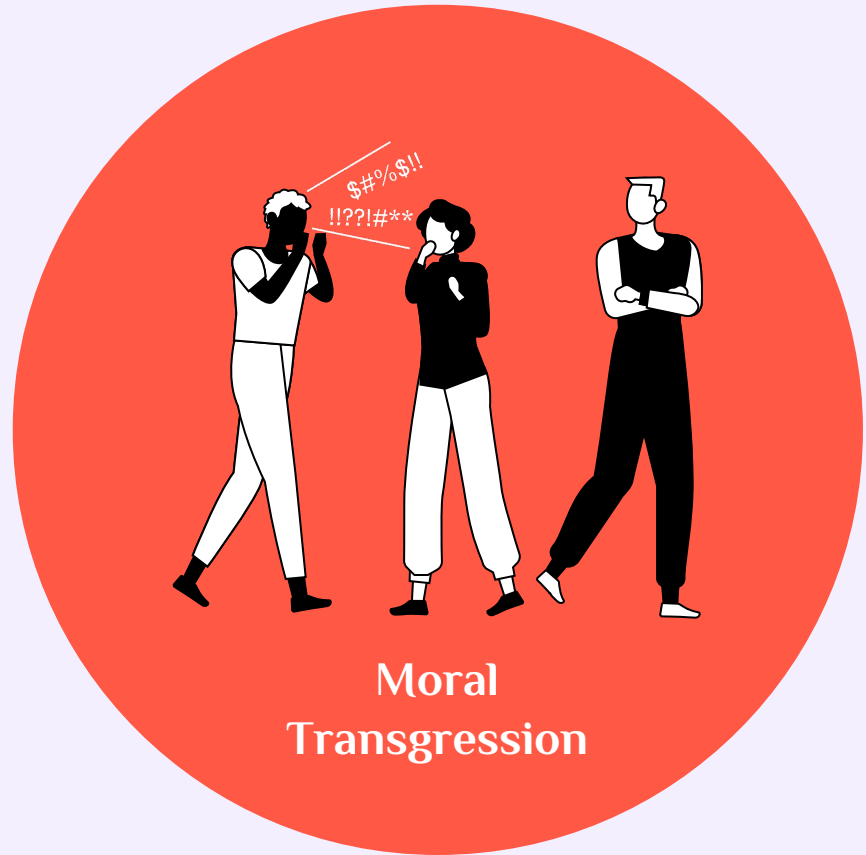
Lei Fan

Department of Experimental and Applied Psychology, VU Amsterdam
Institute of Brain and Behavior Amsterdam



Previously on the Project...





Direct Aggression

vengeance

- Higher Signaling Efficiency
- Immediate Behavioral Changing



BENEFIT

- Confrontation
- Retaliation Possibility
- Identity Exposure



COST

Indirect Aggression

condemnation coordination

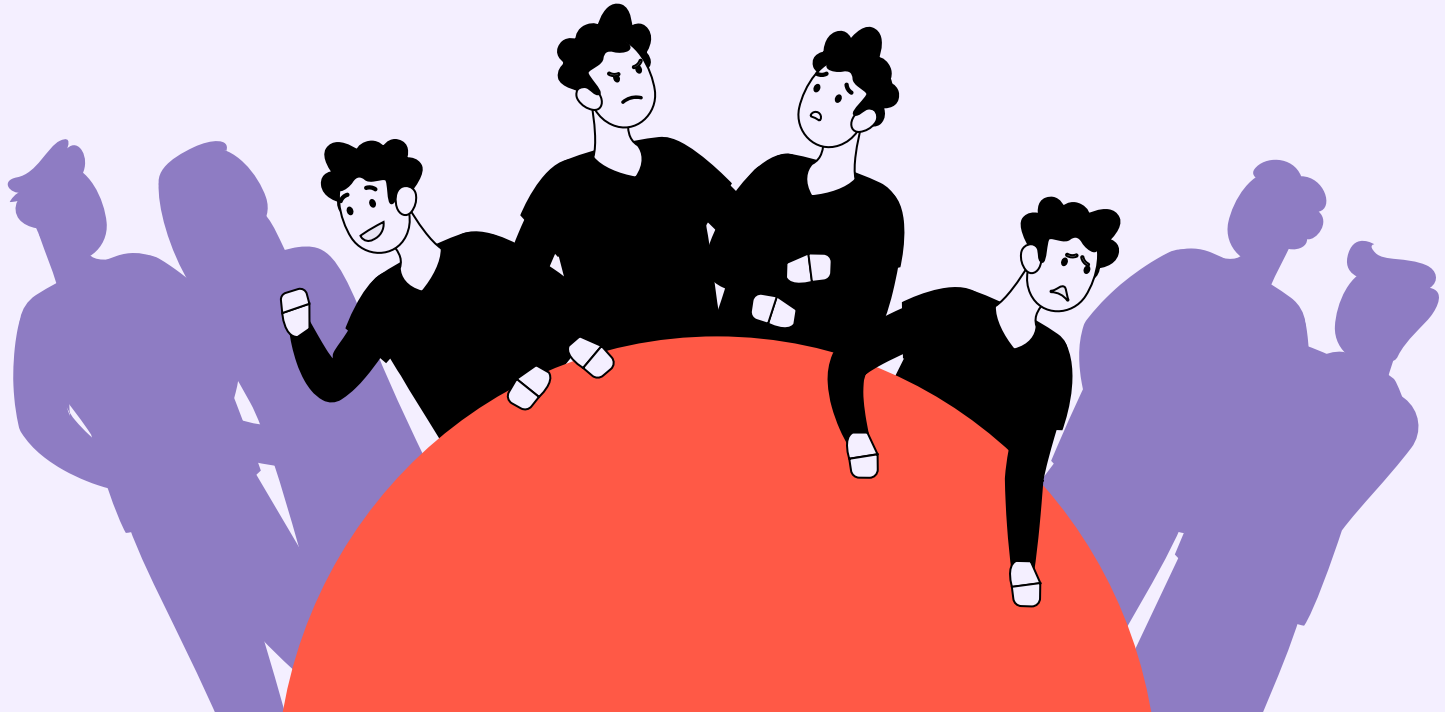
- Lower Signaling Efficiency
- Delayed Behavioral Changing



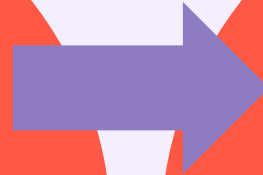
- Alliance
- Cost Sharing
- Identity Protection



Moral Emotion Expression's Societal Function



EMOTION
PERCEPTION



AGGRESSION
EXPECTATION



What if we are Outside the Screen

- Would the signaling of different emotions be perceived correctly?
- Would we infer different aggressive motivations from others who express anger versus disgust toward moral violations?

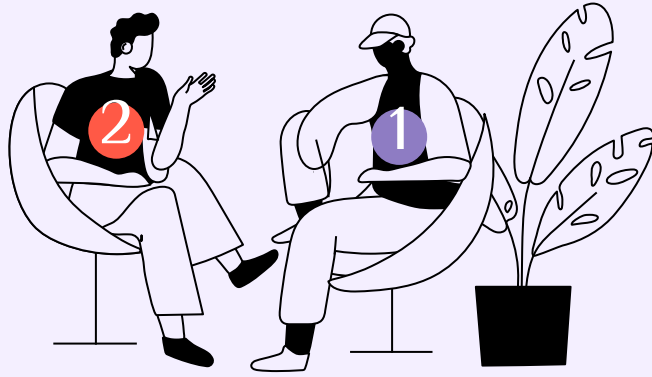




Hypotheses

Emotion Expression

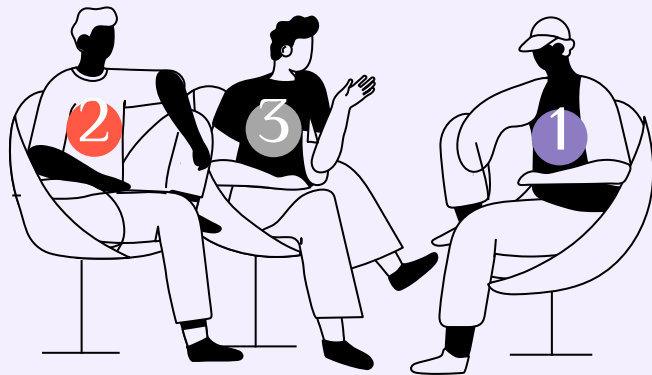
- **H1:** Expressions of anger versus disgust have different effects on expectations of direct versus indirect aggression.
- **H2:** Greater expectations of direct aggression relative to indirect aggression are more likely to be observed in the anger-expression condition relative to the disgust-expression condition.



Hypotheses

Expressor's Agent Role

- **H3:** Agents who are second- versus third-parties are expected to engage in different levels of direct versus indirect aggression.
- **H4:** Greater expectations of direct aggression relative to indirect aggression are more likely to be observed in the second-party condition relative to the third-party condition.



Study 1

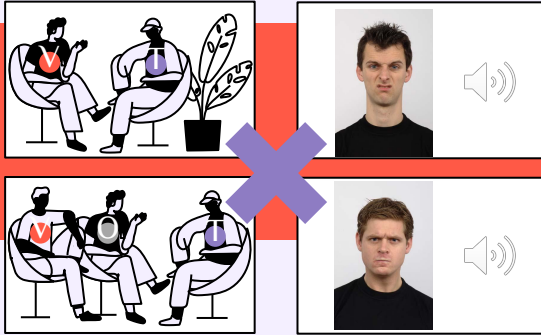
Ambiguous

Moral Violation Scenarios

To limit expectations based on the content of the violation, we described the violation as the transgressor only does something morally wrong.



Method



Perceived
Emotions
○ _____
○ _____

5 Emotions
1-7

Anticipated
Aggression
○ _____
○ _____

5 DA, 6 IA
1-7

Moral
Wrongness
○ _____
○ _____

0-100

Reported
Emotions
○ _____
○ _____

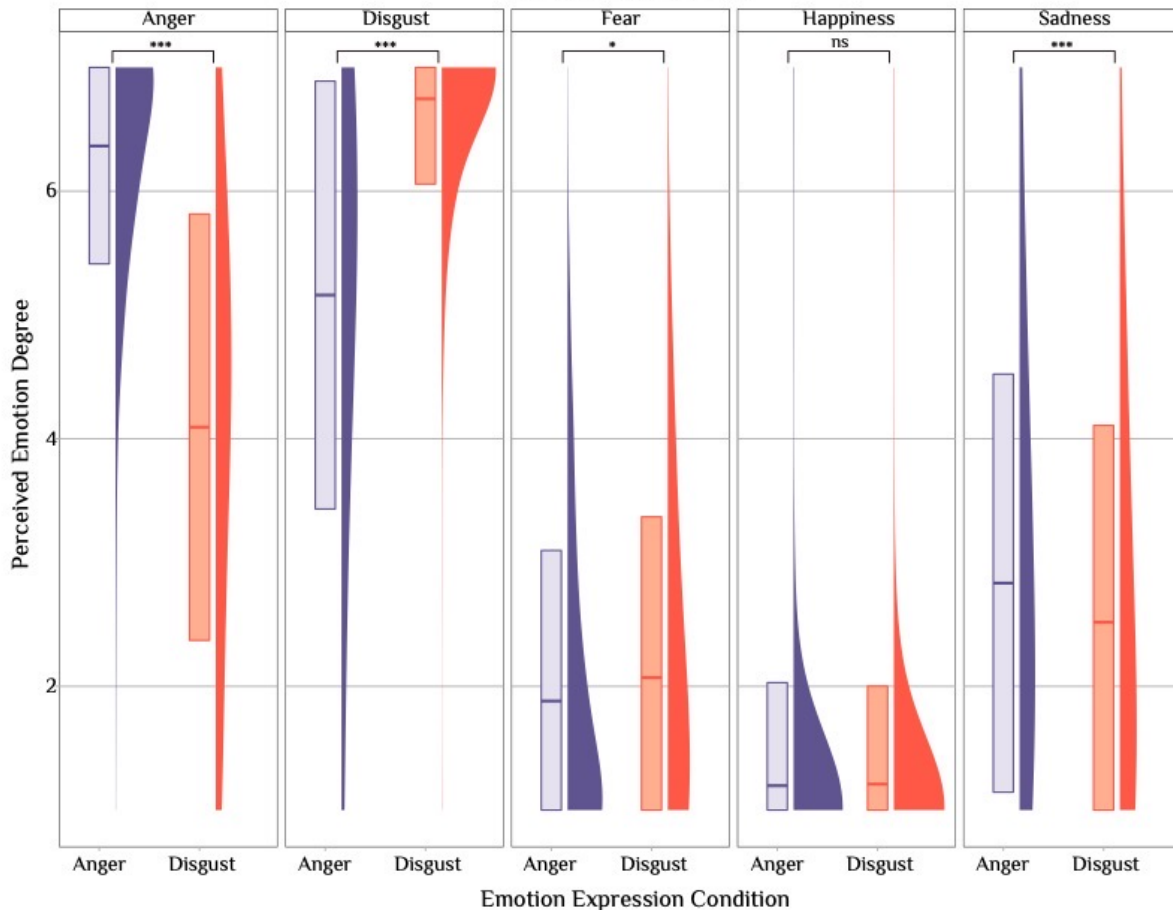
5 Emotions
1-7

“Mark does something to John that Oliver finds to be morally wrong. After seeing John being targeted by Mark’s morally wrong behavior, Oliver makes the following facial and vocal expressions.”

- Two-session online survey on Prolific with a 5-day interval.
- 800 native English speakers at T1, in which 640 completed both.
- 34.13% male; age: $M = 32.15$ years, $SD = 11.40$

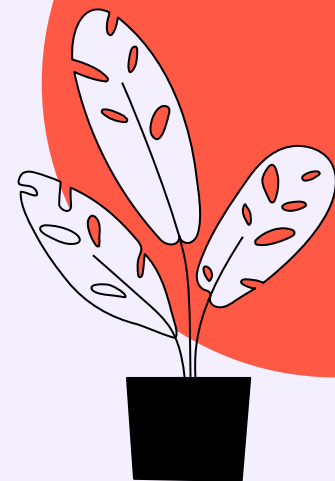


Perceived Emotion Type



Emotion Perception

Distributions of perceived emotion degrees of the 5 emotions between emotion expression conditions.

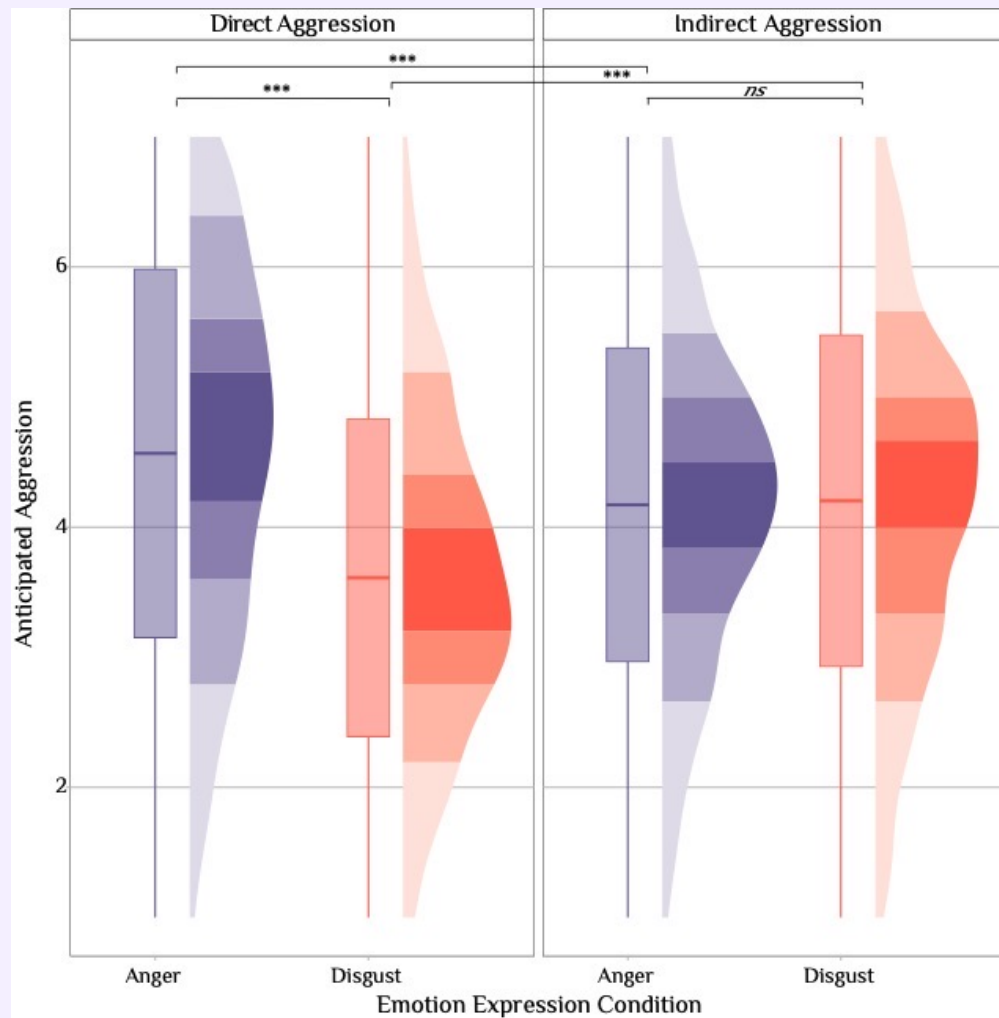


Testing H1 & H2

Distributions of anticipated aggression of the two aggression types between emotion expression conditions.

AggDeg~AggType*AggCon+AggType*EmoCon +
AggType*AggSex+Sex+Age +
(1|AggSex:Stm)+(1|EmoCon:Stm) +
(1+AggCon+EmoCon|PID)

$\beta = 0.19$, 95%CI [0.16,0.21], $p < 0.001$

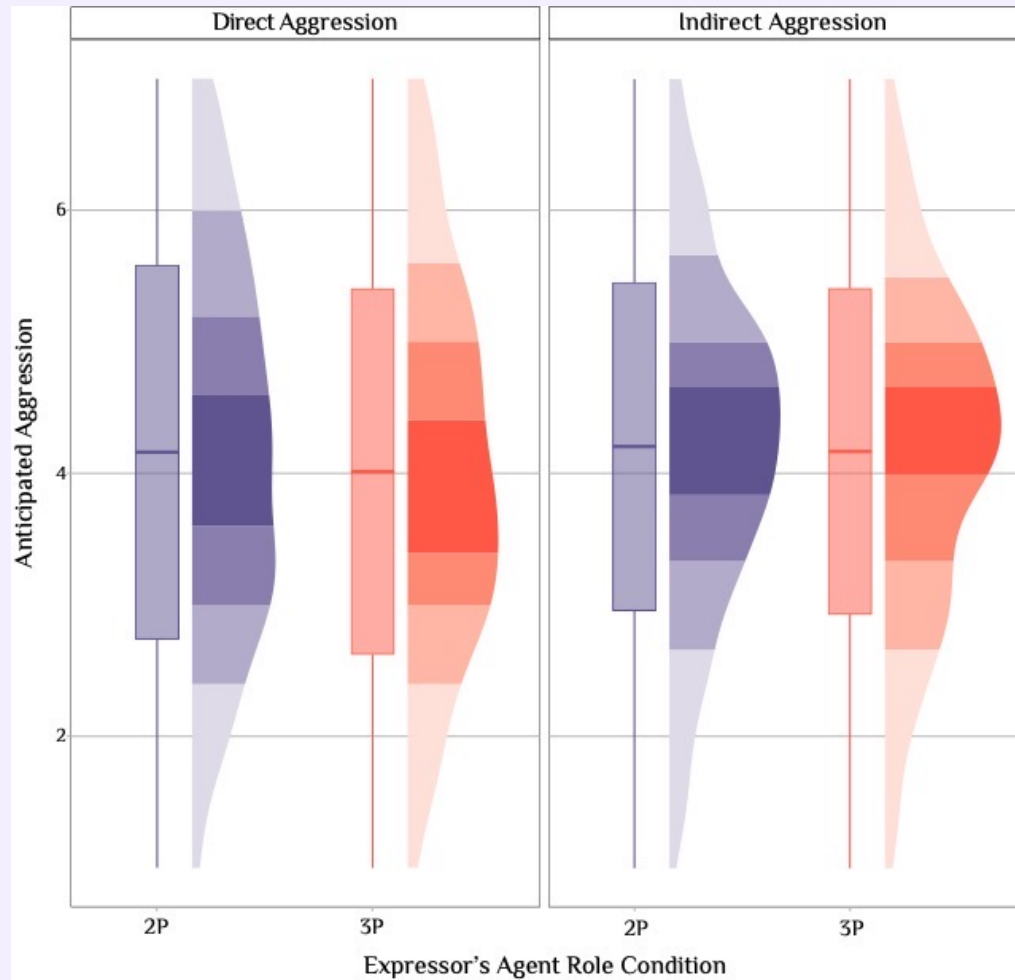


Testing H3 & H4

Distributions of anticipated aggression of the two aggression types between expressor's agent role conditions.

AggDeg~AggType*AggCon+AggType*EmoCon +
AggType*AgtSex+Sex+Age +
(1|AgtSex:Stm) + (1|EmoCon:Stm) +
(1+AggCon+EmoCon|PID)

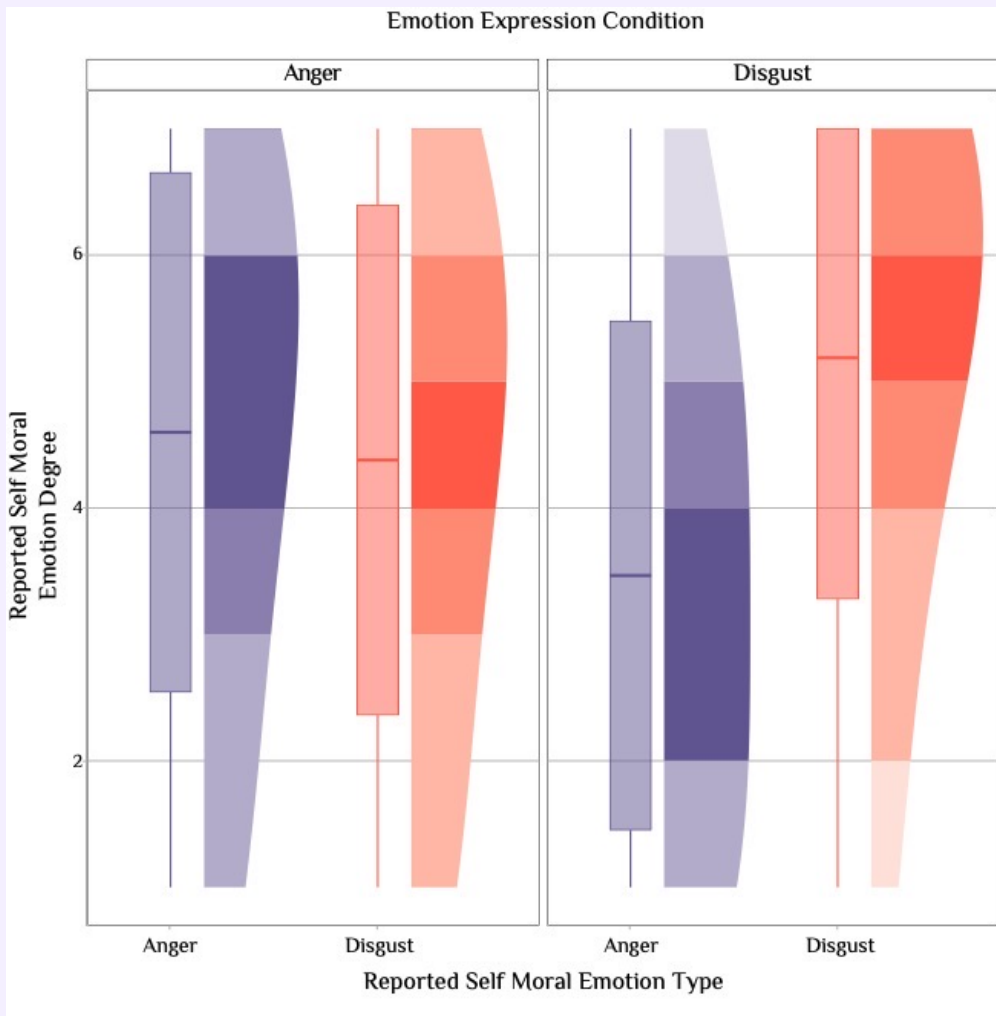
$\beta = 0.02$, 95%CI [-0.00, 0.05], $p = 0.082$



Exploratory Analyses Emotion

The effects of emotion expression conditions on reported self moral emotions.

EmoSfDgr~AgtCon*EmoCon*EmoSfType +
AgtSex + Sex + Age + (1|PID)
 $\beta = 0.23$, 95%CI [0.21, 0.26], $p < 0.001$

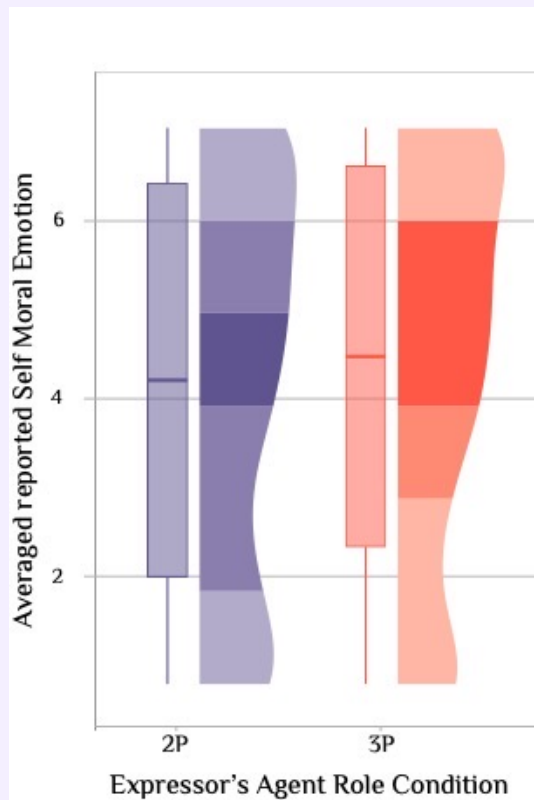
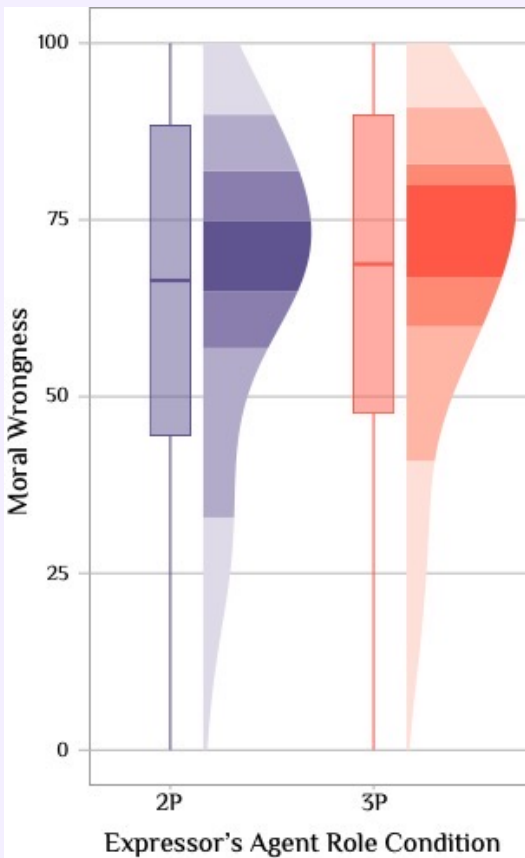


Exploratory Analyses Agent Role

The effects of expressor's agent role condition on moral wrongness perception and averaged reported self moral emotion.

MW~AgtCon*EmoCon + AgtSex +
Sex + Age + (1|AgtSex:Stm)+(1|PID)
 $\beta = -0.05$, 95%CI [-0.09, -0.01], $p = 0.012$

EmoSIfDgr~AgtCon*EmoCon*EmoSIfType +
AgtSex + Sex + Age + (1|PID)
 $\beta = -0.06$, 95%CI [-0.09, -0.03], $p < 0.001$



Summary

- Participants expected **more direct aggression** from **anger** expressors than from **disgust** expressors, but **no differences for indirect aggression**;
- **No differences** in aggression expectations **across second- versus third-party** expressors.
- Participants perceived **greater moral wrongness** and **experienced higher levels of general moral emotions** when the agent was a **third party** than was a second party;
- Participants reported **slightly greater** anger than disgust after an anger expressor toward the moral violator, but they reported **much greater** disgust than anger after a disgust expressor.



Acknowledgement



Joshua Tybur

Vrije Universiteit
Amsterdam



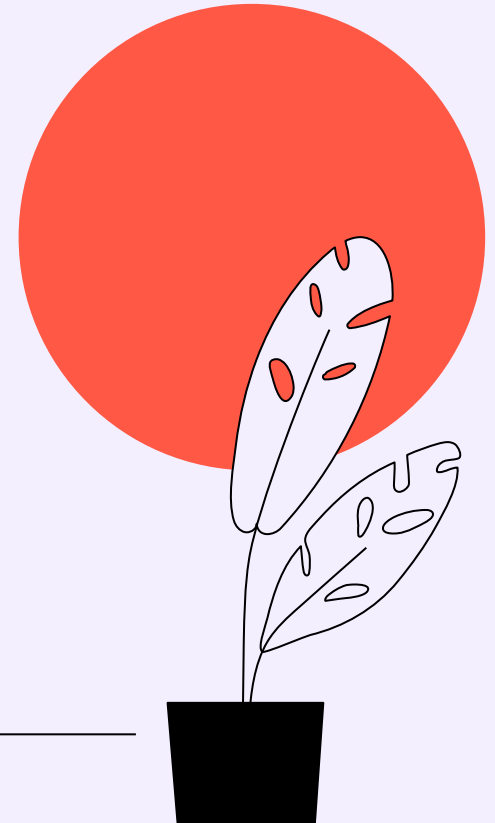
Catherine Molho

Universiteit van
Amsterdam



Thomas Kupfer

Nottingham
Trent University





Thanks!

People Expect Different Aggressive Motivations
from Expressors of Anger Versus Disgust

Lei Fan

VU Amsterdam

Institute of Brain and Behavior Amsterdam

l.fan@vu.nl

